



# E I C H H O L T Z

EST. 1992

FURNITURE

LIGHTING

ACCESSORIES

Introducing the new collection

CELEBRATING  
*the ART of*  
MAKING



EICHHOLTZ

EST. 1992

# EICHHOLTZ

GALLERY AMSTERDAM

Opening of a new Eichholtz experience



EICHHOLTZ.COM | EICHHOLTZUSA.COM

FOLLOW US AT @WORLD OF EICHHOLTZ

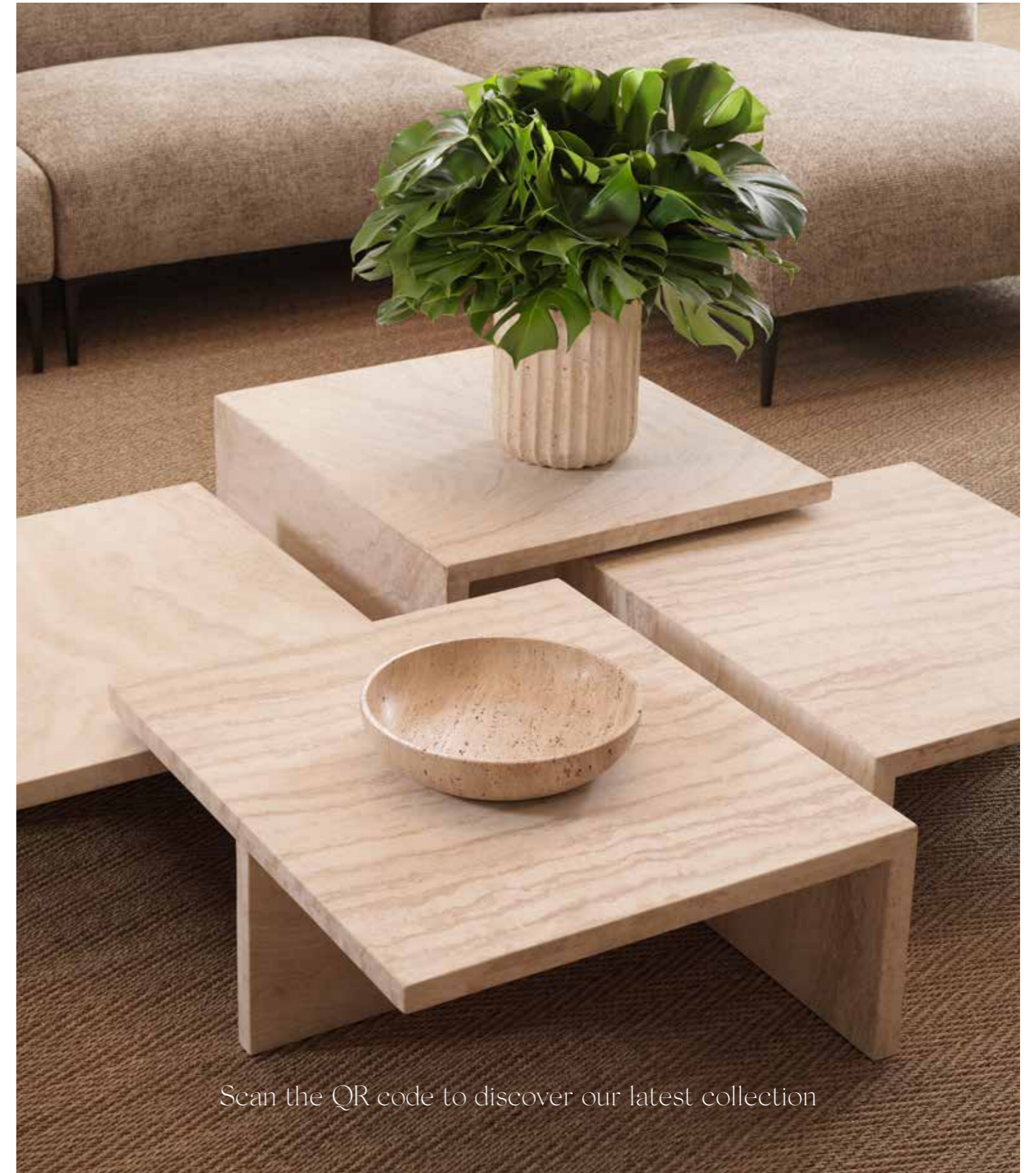
Store locator



FIND THE CLOSEST STORE TO YOU USING OUR STORE LOCATOR

Gallery Amsterdam

MUSEUM QUARTER | PIETER CORNELISZ HOOFDSTRAAT 1  
1071 CB AMSTERDAM, THE NETHERLANDS



Scan the QR code to discover our latest collection



EICHHOLTZ.COM



EICHHOLTZUSA.COM



# A NEW MOOD FOR THIS SEASON

CARPET LIMITLESS  
IVORY | BROWN | HAND KNOTTED  
100% WOOL | 300 X 400 CM



TABLE LAMP COOSA  
BRONZE FINISH



CHAIR THOMPSON  
LYSSA SAND | BRUSHED  
BRASS FINISH LEGS



CARPET ZENON  
IVORY | HAND TUFTED | 300 X 400 CM

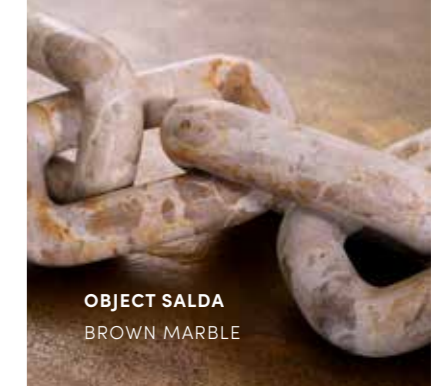
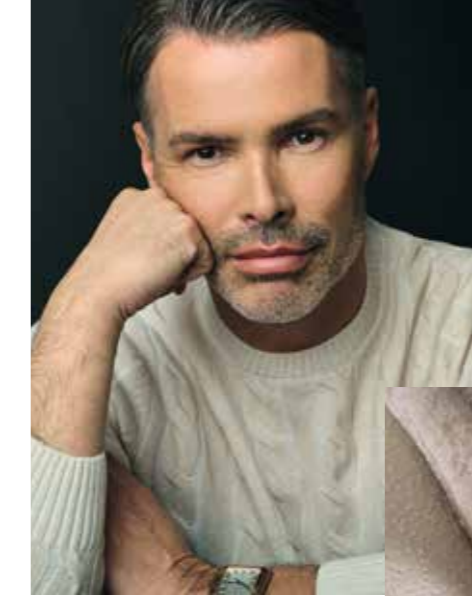


TORSO ARISTO  
ANTIQUE BRONZE FINISH | MARBLE BASE

FROM THE RICH, *earthy color* PALETTE TO BEAUTIFULLY *textural* MATERIALS, THERE'S A RENEWED FOCUS ON NATURE AND *handcraft* THIS SEASON.



HEAD DAVID  
WHITE MARBLE



OBJECT SALDA  
BROWN MARBLE



Global Creative Director *Edwin van der Gun* introduces an elegant *fresh* look for this season.

At Eichholtz we're feeling a great sense of revitalization and optimism. Our creative team has travelled more during the past year to not only feed our senses but spend much needed time with the skilled craftspeople with whom we collaborate.

Reconnecting with our artisanal origins as set out by the founder Theo Eichholtz feels like recapturing the essence of who we are. That means working closely with our trusted partners who always go that extra mile when exploring handcrafted techniques and material combinations to achieve the authenticity, warmth and modern, luxury design excellence customers expect from Eichholtz.

For this season, our carefully curated collection is an homage to those long-held skills of the artisans we work with that include weaving, hand-loomed, carving wood and milling travertine and marble. You'll note that our textures feel quite raw and from nature, such as rough-hewn stone in accessories and tableware, the deeply tactile knotted rope seating on teak chairs, and the luxuriously textural depth of our rug collection. Distinctive handmade art pieces such as hand-finished bronze or marble sculptures and decorative wall-panels play an important role as does the soft feminine feel of the more curvilinear pieces such as our new collection of dining tables. Silhouettes in the larger furniture pieces take on a more organic freeform too, such as the modular sofas, more ostentatiously proportioned.

Ultimately, with this collection we bring you closer to nature and a triumphant return to the great joy and skill of handcrafted luxury design and celebrating the talented artists who make it. We couldn't be prouder of what we've created and hope you love the collection as much as we do.

*Edwin van der Gun*

GLOBAL CREATIVE DIRECTOR





SCAN THE QR-CODE WITH THE CAMERA ON YOUR MOBILE PHONE TO GET INSPIRED BY THE PHILIPP PLEIN HOME COLLECTION.



EICHHOLTZ.COM



EICHHOLTZUSA.COM




PHILIPP PLEIN  
HOME COLLECTION



WE BRING YOU THE HIGH *voltage*  
AND *extravagant* WORLD OF THE  
PHILIPP PLEIN HOME COLLECTION

VISIT OUR WEBSITE TO DISCOVER THE COLLECTION



WITH TECHNIQUES PASSED  
DOWN THE GENERATIONS  
ARTISANAL TRADITIONS  
THAT PAY HOMAGE TO THE  
SKILLED MAKERS WHO  
CREATE TIMELESS DESIGNS  
FORM THE FOUNDATION OF  
THIS COLLECTION.

BOWL LIZZ L BROWN MARBLE

# NATURAL BEAUTY

Traditional hand-loomed, hand-knotted, and woven techniques bring a depth, elegance, and tactility to the new Eichholtz rug collection.

This season's fine quality, handcrafted rugs become future heirlooms.

**BE INSPIRED BY THE COMPLETE COLLECTION ON OUR WEBSITE**









“EXPLORING *texture*,  
LAYERING AND SUMPTUOUS  
MATERIALITY THROUGH THIS  
NEW RUG COLLECTION  
*feels* LIKE THE ULTIMATE  
EXPRESSION OF THE  
EICHHOLTZ BRAND.”

“WE TAKE A DEEP DIVE  
INTO THE *beauty* OF  
CRAFTSMANSHIP WITH OUR  
LATEST COLLECTION OF  
RUGS. EACH PIECE TELLS  
A *story* OF TECHNIQUE,  
TRADITION, AND SKILL.”

EDWIN VAN DER GUN, GLOBAL CREATIVE DIRECTOR

The rug collection is characterized by the lush, warm tones and textures of nature. Each luxurious piece has been created using time-honored traditions of hand-knotting, hand-loomed, and weaving in beautifully soft wools and wool blends that feel plush underfoot. In collaboration with our master craftspeople in India and Indonesia, these are the products that will last a lifetime, made with care, precision, and authenticity, and designed with our signature timeless elegance.

# CARINTHIA

HAND WOVEN WOOL



200 X 300 CM | 300 X 400 CM  
BEIGE BROWN

# VAVA

HAND WOVEN WOOL

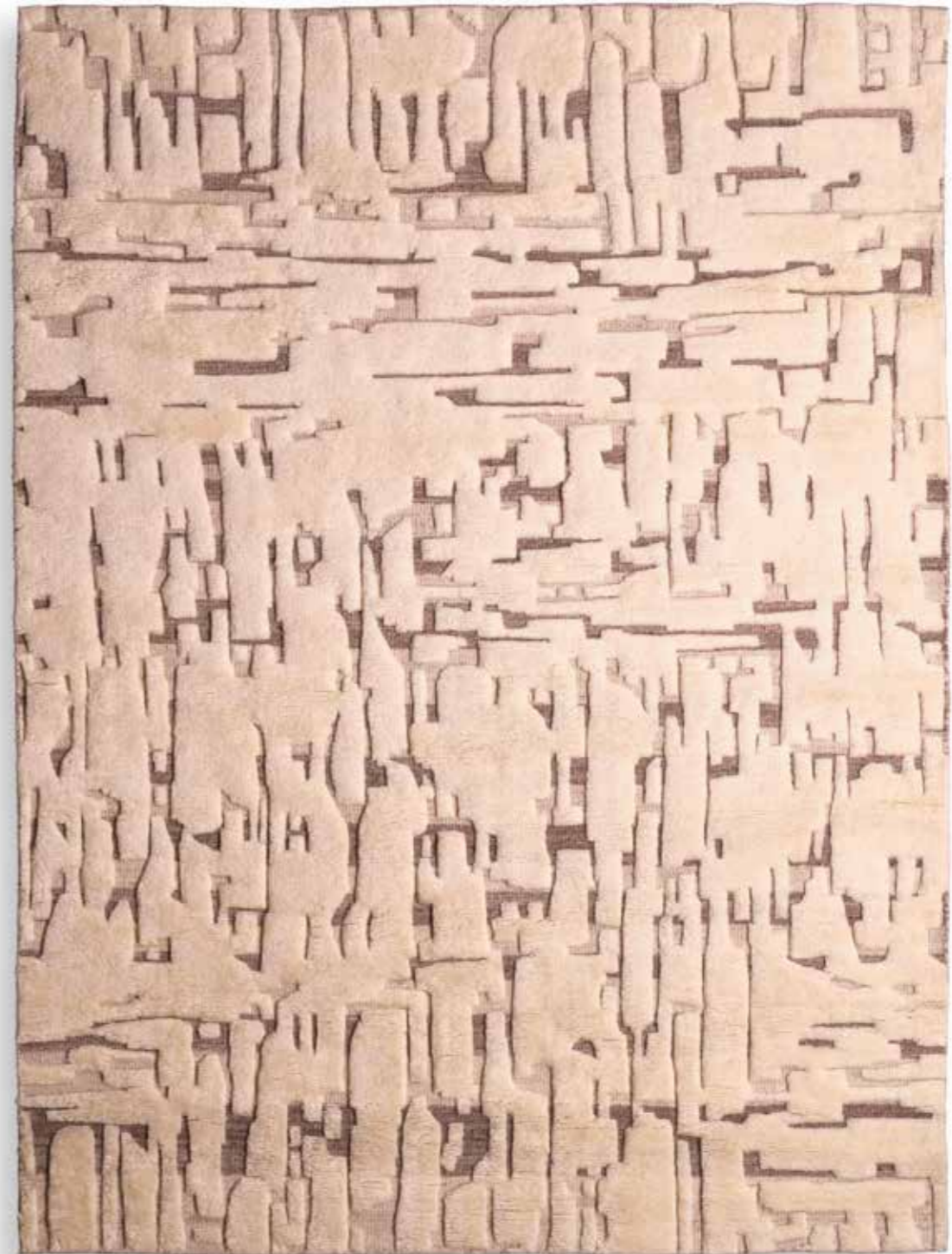


200 X 300 CM | 300 X 400 CM  
BLACK IVORY



# EMINENCE

HAND KNOTTED WOOL



200 X 300 CM | 300 X 400 CM

IVORY BROWN



**RAW TEXTURAL FINISHES INSPIRED BY NATURE**

- 1. CARPET TALITHA BLACK | IVORY 2. CUSHION AMPHION S IVORY | HAND WOVEN | NEW ZEALAND WOOL 3. CHAIR TOTO LYSSA SAND 4. CHAISE LONGUE UDINE LYSSA OFF-WHITE | BLACK FEET
- 5. CHANDELIER BERMAUDE ANTIQUE BRASS FINISH | CLEAR GLASS 6. STOOL SCHILLINGER IVORY | HAND WOVEN 7. DESK ACCESSORY VISA WHITE MARBLE 8. COFFEE TABLE PRELUDE WASHED FINISH
- 9. SOFA SIDNEY NUORO BEIGE | BLACK FEET







LAYERING *Textures* FOR *this* SEASON

- 1. CHANDELIER EOS ANTIQUE BRASS FINISH | ALABASTER
- 2. HEAD HEROS ANTIQUE BRONZE FINISH | MARBLE BASE
- 3. WALL OBJECT AZUREA BRONZE FINISH
- 4. BOWL REVOLT BROWN MARBLE
- 5. DRESSER DENVER MOCHA OAK VENEER | BRUSHED BRASS FINISH LEGS
- 6. COFFEE TABLE LINDNER NATURAL OAK VENEER
- 7. BOWL AVANCE HAND BLOWN GLASS | SAND COLOUR
- 8. VASE AVANCE L HAND BLOWN GLASS | SAND COLOUR
- 9. CHAIR THOMPSON FAUX SHEARLING | BRUSHED BRASS FINISH LEGS

# DESIGN TO LAST A LIFETIME

From the timelessness of marble, stone, wood,  
and bronze, forever luxury takes on new meaning.

BE INSPIRED BY THE COMPLETE COLLECTION ON OUR WEBSITE





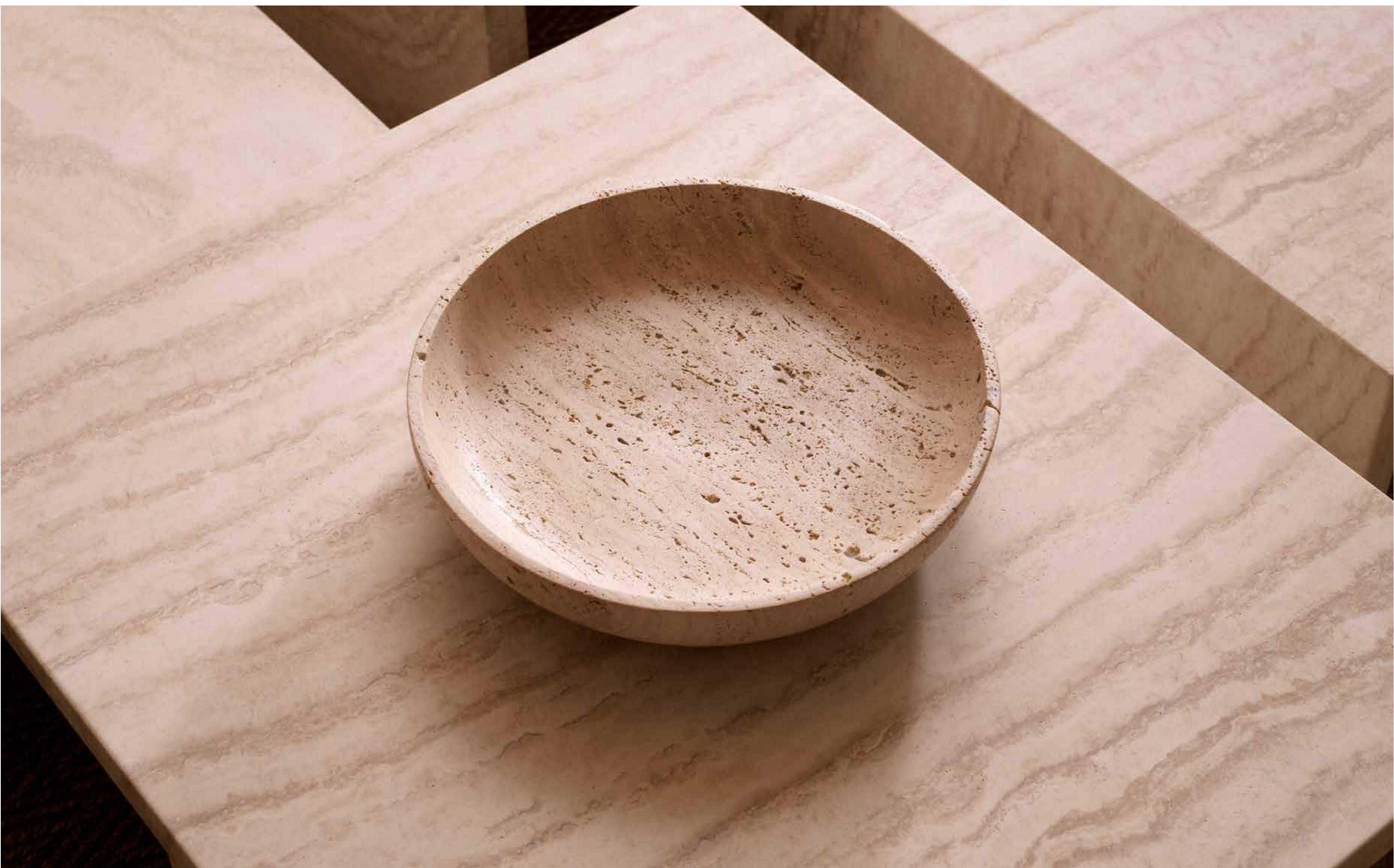




SOFT *Neutrals* AND *Organic* FORMS

1. **MIRROR RODION** BRONZE FINISH 2. **PICTURE FRAME CASALE S** TRAVERTINE | CLEAR GLASS 3. **OBJECT ERAS** BROWN MARBLE 4. **TABLE LAMP MELIA** ALABASTER 5. **PLAID ZERA** OFF WHITE | GREIGE | 90% WOOL | 10% CASHMERE 6. **TORSO AGATHOS** ANTIQUE BRONZE FINISH | MARBLE BASE 7. **CHANDELIER SPHINX** ANTIQUE BRASS FINISH | ALABASTER 8. **SWIVEL CHAIR PHEDRA** LYSSA SAND | BRUSHED BRASS FINISH SWIVEL BASE 9. **VASE NAVA** BROWN MARBLE 10. **SOFA RESIDENZA** LYSSA SAND 11. **COFFEE TABLE PRELUDE** TRAVERTINE







# THE ALLURE OF TEAK

With its natural characteristics that make it highly durable and water repellent, we showcase the beauty and strength of teak as a key material for indoor and outdoor furniture.

Presenting handcrafted teak furniture harvested from sustainably managed forests in Indonesia.

[DISCOVER MORE ABOUT THE OUTDOOR COLLECTION ON OUR WEBSITE](#)



## THOUGHTFUL ARTISTRY

Traditional techniques of intricately handweaving rope cord over a wooden frame brings not only superior comfort to seating but an understated style and stability that will last.

DRAWING ON DESIGN INSPIRATION  
FROM *vintage* CLASSICS, THIS  
SEASON'S NEW SEATING FEELS AT  
ONCE ARCHITECTURAL, BEAUTIFULLY  
SIMPLE AND STEEPED IN FINE *craft*.



VISION OF THE FOUNDER

“Our outdoor collections take *design cues* from our most *popular* indoor furniture pieces. That means great attention to detail in materials, craft, and finish.”



**CHAIR HERA**  
NATURAL TEAK |  
FLORES OFF-WHITE

**DINING CHAIR HERA**  
NATURAL TEAK |  
FLORES OFF-WHITE



**THEO EICHHOLTZ**  
*Company Founder &  
Chief Creative Officer*

“Silhouettes are more *freeform*, and proportions are bigger. This will be the year for entertaining *outside*.”



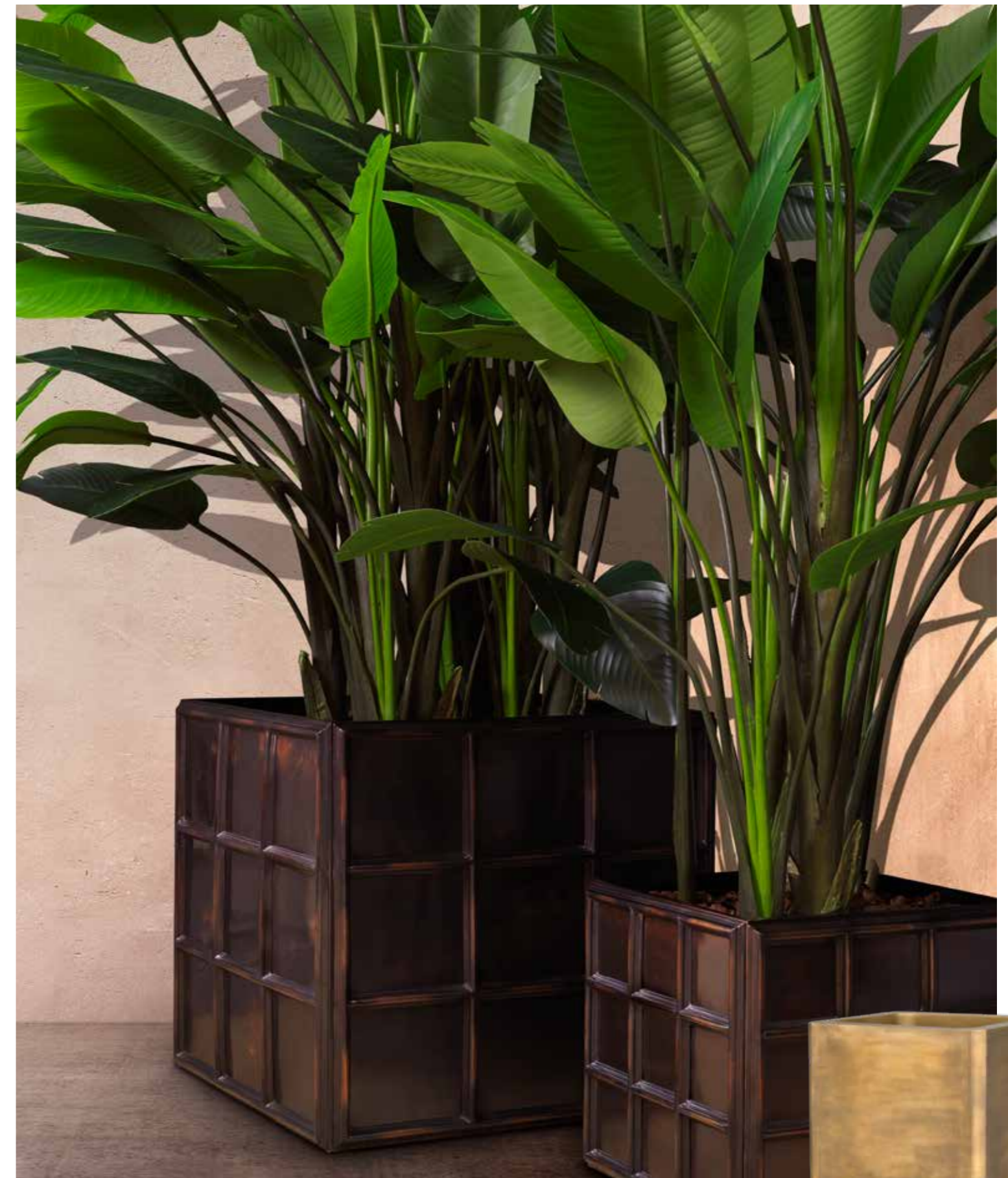
TAKING *Craftsmanship* OUTDOORS

**1. DINING CHAIR KRISTO** NATURAL TEAK | BLACK WEAVE **2. DINING CHAIR GRIFFIN** NATURAL TEAK | NATURAL WEAVE **3. SOFA MANZO** NATURAL TEAK | FLORES OFF-WHITE **4. COFFEE TABLE ANJUNA** NATURAL TEAK **5. DINING CHAIR KRISTO** NATURAL TEAK | NATURAL WEAVE **6. DINING CHAIR HERA** NATURAL TEAK | FLORES OFF-WHITE



WHERE *Indoor/Outdoor* DESIGN MEETS

- 1. **CHAIR MANZO** CLASSIC BLACK FINISH | BOUCLÉ GREY
- 2. **COFFEE TABLE CLEON** OFF-WHITE
- 3. **SOFA LAGUNO** SAND FINISH | LEWIS OFF-WHITE/GREY
- 4. **COFFEE TABLE LAGUNO** SAND FINISH
- 5. **BASKET PAPAYA L** NATURAL JUTE
- 6. **BASKET NIKKO S** NATURAL JUTE
- 7. **OUTDOOR CARPET LORIANO** TAUPE | HAND WOVEN | 90% RECYCLED PET
- 8. **OUTDOOR CARPET ROMARI** BEIGE | HAND WOVEN | 90% RECYCLED PET
- 9. **CHAIR MANZO OUTDOOR** NATURAL TEAK | FLORES OFF-WHITE
- 10. **COFFEE TABLE MATIZ** WHITE HIGH GLOSS
- 11. **SOFA LIBERO ROUND** BROWN ASH WOOD | FIDENZA OFF-WHITE



**PLANTER GRID L**  
ANTIQUE BRONZE FINISH  
79 X 79 X H. 71,5 CM | 31.1" X 31.1" X 28.15" H

**PLANTER GRID S**  
ANTIQUE BRONZE FINISH  
52,5 X 52,5 X H. 47 CM | 20.67" X 20.67" X 18.5" H

**PLANTER JASPER SQUARE XS**  
VINTAGE BRASS FINISH | BLACK BASE  
60 X 60 X H. 35,5 CM | 23.62" X 23.62" X 13.98" H

**PLANTER JASPER SQUARE HIGH**  
VINTAGE BRASS FINISH | BLACK BASE  
70 X 70 X H. 100 CM | 27.56" X 27.56" X 39.37" H

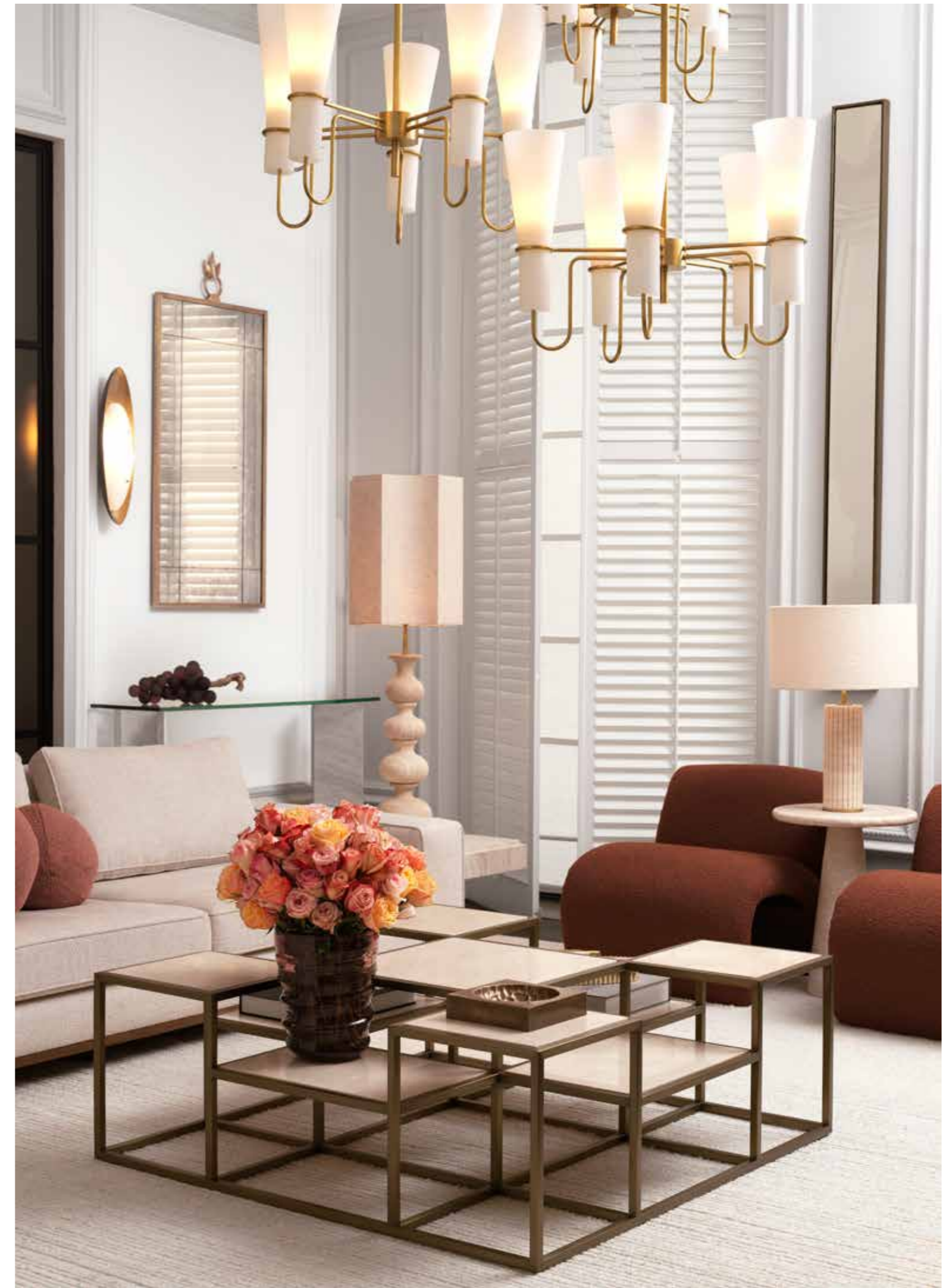


# CREATING SOFTER FORMS



This season there is an increased focus on the return to entertaining with extravagant proportions and rich textures in upholstered pieces and occasional tables.

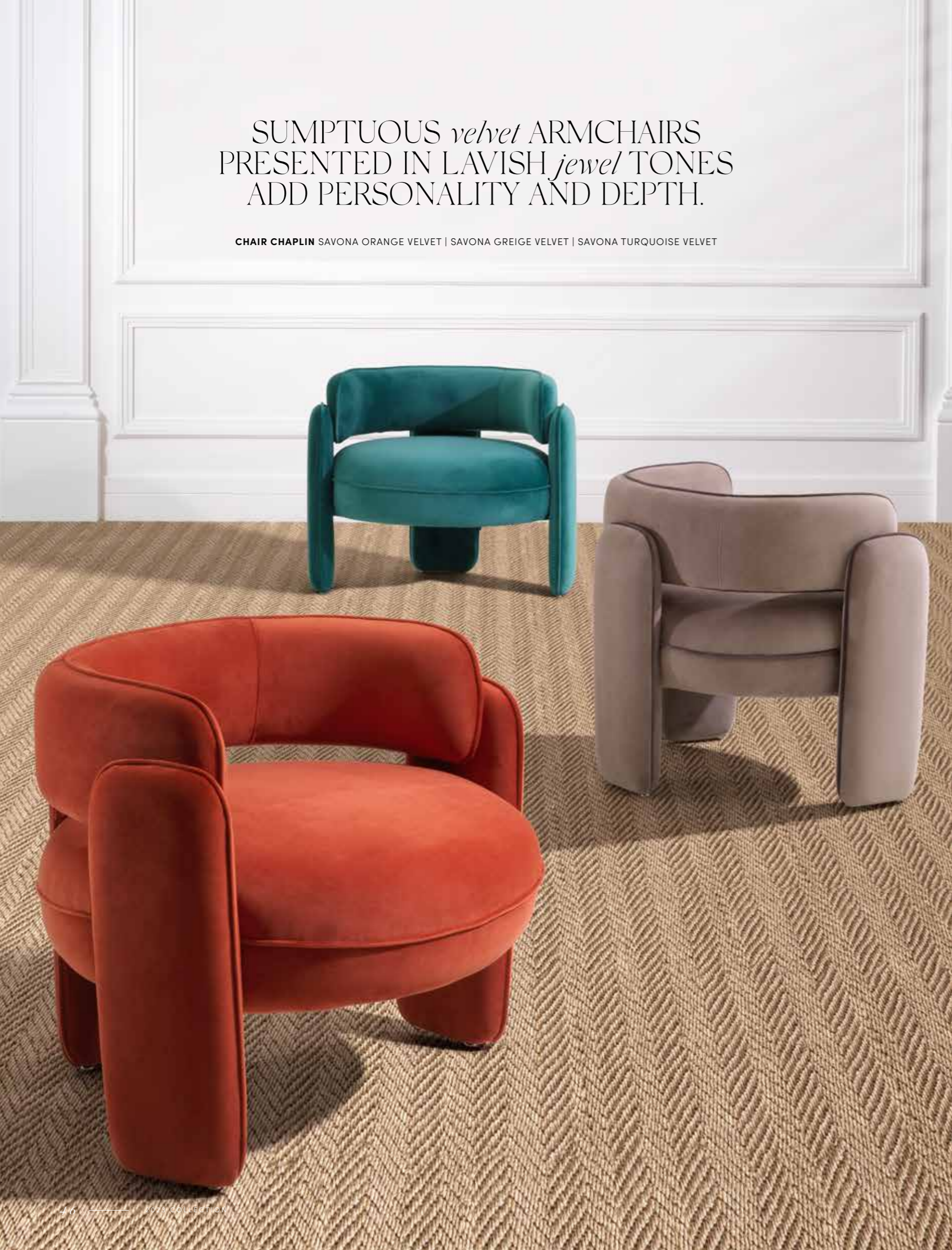
- 1. **CARPET NIRVANA** BLACK & IVORY | HAND KNOTTED | 100% WOOL
- 2. **FLOOR LAMP NOVENTO** ANTIQUE BRASS FINISH | WHITE GLASS | BLACK BASE
- 3. **SOFA FIRENZE** LYSSA SAND | BLACK LEGS
- 4. **CHANDELIER ORIENTAL** VINTAGE BRASS FINISH | WHITE LINEN SHADE
- 5. **VASE LARISA** HAND BLOWN GLASS | BROWN COLOR
- 6. **COFFEE TABLE OTUS SQUARE** EUCALYPTUS HIGH GLOSS VENEER | BRONZE FINISH
- 7. **COFFEE TABLE OTUS ROUND** EUCALYPTUS HIGH GLOSS VENEER | BRONZE FINISH
- 8. **SOFA XYLON** ATTESSO BEIGE
- 9. **COFFEE TABLE ORACLE** HIGH GLOSS MAPLE VENEER | BRUSHED BRASS FINISH
- 10. **CHAIR DONATO** BRUSHED BRASS FINISH | BOUCLÉ CREAM
- 11. **ARTE ESSENTIALS** TANGRAM SPLICE TOFFEE





SUMPTUOUS *velvet* ARMCHAIRS  
PRESENTED IN LAVISH *jewel* TONES  
ADD PERSONALITY AND DEPTH.

CHAIR CHAPLIN SAVONA ORANGE VELVET | SAVONA GREIGE VELVET | SAVONA TURQUOISE VELVET



CHAIR CHAPLIN  
SAVONA TURQUOISE VELVET



## THE JOY OF COLOR

With a foundation palette of soft, muted shades, adding brighter hues to the mix inspired by the natural beauty of gemstones builds an elevated opulence.

“COLOR, PATTERN, AND TEXTURE TAKE THIS COLLECTION TO A *new level* OF LUXURY. WE’RE FOCUSED ON ROUNDER SILHOUETTES, GRANDER SCALE AND A *rich* PALETTE OF MATERIALS AND TONES, WHICH FEEL *inviting* AND SOPHISTICATED.”

*Edwin van der Gun*

EDWIN VAN DER GUN | GLOBAL CREATIVE DIRECTOR



LUXURIOUS STATEMENT PIECES

- 1. CUSHION DORIS S ORANGE | DARK ORANGE FRINGE 2. CUSHION DORIS L BLUE | DARK BLUE FRINGE 3. CUSHION DORIS L GREEN | DARK GREEN FRINGE
- 4. CHAIR CHAPLIN SAVONA ORANGE VELVET 5. DINING CHAIR MASTERS CLARCK SAND | BLACK FINISH SWIVEL BASE 6. BOWL MOOD ORANGE SWIRL
- 7. VASE BLOOM HAND BLOWN GLASS | BLUE COLOR 8. SIDE TABLE MATIZ WHITE HIGH GLOSS 9. BENCH OXLEY SAVONA ORANGE VELVET | BRUSHED BRASS FINISH LEGS 10. SIDE TABLE TIGRA BRONZE FINISH 11. CHAIR MORTENSEN NUORO BEIGE | BLACK FINISH 12. CARPET SCHILLINGER IVORY | HAND WOVEN | 85% WOOL | 12% COTTON 13. PLAID ZERA FBLUE | OFF-WHITE | 90% WOOL | 10% CASHMERE

PLAID RHODA  
LIGHT BROWN | CAMEL



CUSHION RHODA S  
LIGHT BROWN | CAMEL



There is comfort and understated luxury in the *softness* and *elegance* of woven throws. Hand-finished in wool and wool blends, presented in rich tones of the *earth*, each piece creates new interest to the design of a room.



PLAID ZERA  
OFF-WHITE



# The GENTLE TOUCH

WOOL & CASHMERE FABRICS

- 1. PLAID RHODA ORANGE 2. PLAID ZERA OFF-WHITE | GREIGE 3. CUSHION RHODA L ORANGE 4. CUSHION ZERA S GREIGE | OFF-WHITE 5. CUSHION THANA S OFF-WHITE | GREIGE | SAND 6. CUSHION RHODA L GREY | DARK GREY 7. PLAID RHODA GREY | DARK GREY 8. CUSHION ZERA S OFF-WHITE | BLUE 9. CUSHION ZERA L BLUE | OFF-WHITE





LAYERING TEXTURES IN *neutral*  
TONES WITH ACCENTS OF WOOD  
AND METALLICS FEELS AT ONCE  
*contemporary* AND TIMELESS.  
PROPORTIONS TOO ARE  
EXTRAVAGANT AND CREATE  
AN *ambience* OF CONVIVIALITY.

# CREATING THE SOFTTEST GLOW

Lighting this season feels pared back in its design and materiality. Metallics are muted and refined materials including alabaster and hand-blown glass feature throughout the collection.

BE INSPIRED BY THE COMPLETE COLLECTION ON OUR WEBSITE



## VINTAGE INSPIRED

With undertones of 1960s and 70s classic design, lighting feels right for modern luxury living.

## TIMELESS DESIGN

1. CHANDELIER ARAM ANTIQUE BRASS FINISH | WHITE GLASS 2. TABLE LAMP CHÂTEL BRONZE HIGHLIGHT FINISH | ALABASTER  
3. CHANDELIER SANKT GALLEN S ALABASTER | BRONZE HIGHLIGHT FINISH 4. TABLE LAMP CHAMONIX ANTIQUE BRASS FINISH | ALABASTER  
5. TABLE LAMP ARION BRONZE HIGHLIGHT FINISH | ANTIQUE BRASS FINISH 6. TABLE LAMP VOLO GUNMETAL FINISH | GOLD FINISH  
7. TABLE LAMP SANTORO VINTAGE BRASS FINISH 8. TABLE LAMP STILLA ANTIQUE BRASS FINISH | CRYSTAL GLASS



THIS SEASON CHANDELIERS ARE TAKEN TO THE MAX HAVING BEEN REIMAGINED IN *fabulously* DECADENT PROPORTIONS. THESE ARE THE ULTIMATE STATEMENTS IN DESIGN AND *craftsmanship*. WITH EACH ELEMENT *handblown* WITH CARE AND PRECISION.

Glamour leads the way with the Eichholtz collection of chandeliers. Taking design cues from showstopper vintage lights, the Chandelier Saint Roch and Chandelier Greyson work in contemporary settings with the attention to detail of the handblown glass elements in smoke or clear glass as well as an unexpectedly grand scale. Each piece is fabricated around its metal tiered structure crafted in light or antique brushed brass finish for a truly luxe appeal.

# SAINT ROCH

Ø 116 X H. 153 CM | 45.67' DIA X 60.24' H



**CHANDELIER SAINT ROCH XXL**  
LIGHT BRUSHED BRASS FINISH | SMOKE GLASS

# GREYSON

Ø 114 X H. 141 CM | 44.88' DIA X 55.51' H



**CHANDELIER GREYSON XXL**  
ANTIQUE BRASS FINISH | HAND BLOWN GLASS







“WE’VE PLAYED WITH THE *scale AND proportions* OF DINING TABLES THIS SEASON TO GET AWAY FROM ANYTHING THAT FEELS TOO WORKPLACE. THE SOFT FORMS MAKE THESE PIECES FEEL ESPECIALLY *elegant.*”

EDWIN VAN DER GUN, GLOBAL CREATIVE DIRECTOR

The new dining table series has been designed to complement our extensive dining chairs collection. Therefore, we’ve created over 30 new tables in beautifully rich timbers, smooth stucco, marble, travertine, and glass. Silhouettes are freeform and more organic while table legs feel more sculptural.



## STRUCTURE *and* FORM

1. DINING TABLE ASTRO NATURAL OAK VENEER | MEDIUM BRONZE FINISH 2. DINING TABLE BERGMAN L CHARCOAL GREY OAK VENEER  
3. DINING CHAIR PERCY BOUCLÉ CREAM | BLACK FINISH 4. COFFEE TABLE BERGMAN CHARCOAL GREY OAK VENEER 5. DINING TABLE BERGMAN S  
CHARCOAL GREY OAK VENEER 6. DINING CHAIR CAMPUS SISLEY BEIGE | BLACK FINISH LEGS 7. DINING TABLE FLEMINGS NATURAL OAK VENEER

# MODESTO

180 X 80 X H. 76 CM | 70.87' X 31.5' X 29.92' H



**DESK MODESTO**

MOCHA OAK VENEER | BRUSHED BRASS FINISH

# JULIUS

240 X 100 X H. 76 CM | 94.49' X 39.37' X 29.92' H



**DINING TABLE JULIUS**

MOCHA OAK VENEER | MEDIUM BRONZE FINISH

STYLING YOUR WAY

# SHARE YOUR EICHHOLTZ FAVORITES WITH US

Seeing how our clients curate their Eichholtz furniture is a constant source of joy and inspiration for us. Now you can inspire others by sharing your photographs on Pinterest and Instagram using the hashtags **#Worldofeichholtz** or **#Eichholtz** for the chance to be featured on our social media channels.



FOLLOW EICHHOLTZ ON INSTAGRAM  
@WORLDOFEICHHOLTZ

# EICHHOLTZ

GALLERY MIAMI

Opening of a new Eichholtz experience



EICHHOLTZMIAMI.COM | INFO@EICHHOLTZMIAMI.COM

FOLLOW US AT @WORLDOFEICHHOLTZ

Store locator

Gallery Miami



FIND THE CLOSEST STORE TO YOU USING  
OUR STORE LOCATOR

DESIGN DISTRICT | 3711 NE 2ND AVE MIAMI, FLORIDA  
EICHHOLTZMIAMI.COM



E I C H H O L T Z

EST. 1992

[EICHHOLTZ.COM](http://EICHHOLTZ.COM)

[EICHHOLTZUSA.COM](http://EICHHOLTZUSA.COM)